

# Advanced Wear Resistance Technology

*Engineered for Tire Recycling*



 **HARDFACE**  
TECHNOLOGIES  
by POSTLE INDUSTRIES

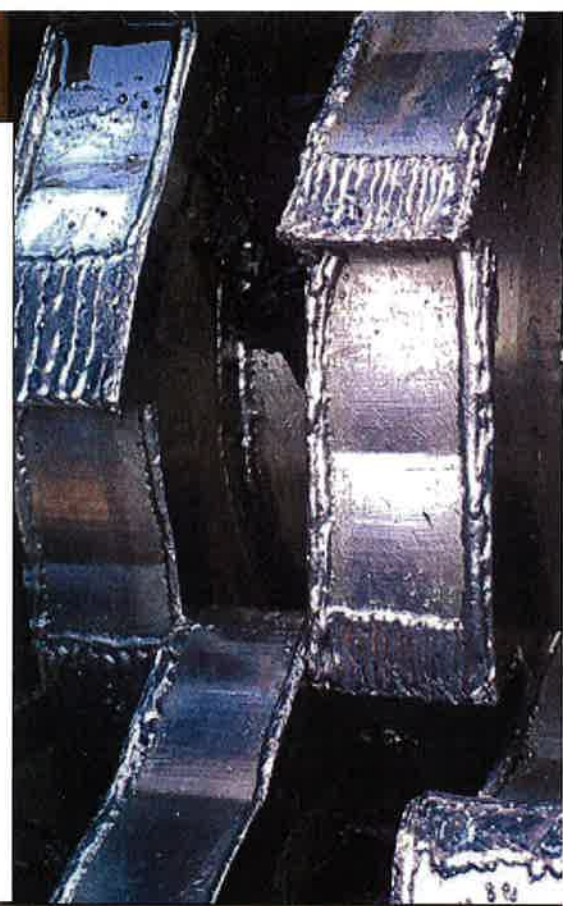
[www.hardfacetechnologies.com](http://www.hardfacetechnologies.com)





## POSTLE INDUSTRIES

- ✦ OVER 40 YEARS OF EXPERIENCE IN THE MANUFACTURE OF HARDFACING CONSUMABLES
- ✦ CONSUMABLES DEVELOPED SPECIFICALLY FOR TIRE SHREDDING KNIVES
- ✦ CAN CUSTOMIZE PRODUCTS TO FIT YOUR NEEDS
- ✦ TECHNICAL EXPERTISE IN WELDING PROCEDURES AND APPLICATIONS
- ✦ ABLE TO PROVIDE TRAINING



## PRODUCT FEATURES

- ✦ EXCELLENT OPERATOR APPEAL
- ✦ LOW SPATTER
- ✦ EASY FEEDABILITY
- ✦ SUPERIOR EDGE RETENTION
- ✦ SLAG FREE
- ✦ ABRASION AND IMPACT RESISTANT



## POSTALLOY 2898 – SPL

Short-Arc	Spray-Arc		
.045" (1.2mm)		<p>A general purpose self-hardening overlay wire with a balanced resistance to abrasion and impact. Has good metal-to-metal wear resistance and is resistant to chipping and spalling. Deposits will retain their hardness and maintain a good cutting edge up to 1100°F (595°C). For maximum impact resistance and to avoid cracking in multi-layer deposits, a preheat of 550°F (288°C) is recommended. For repeated multi-layer deposits, a preheat of 650°F (343°C) is recommended.</p>	
17-19 Volts Argon/CO2 30-35 CFH 1/2" Stickout	26-29 Volts Argon/Oxygen 40-45 CFH 5/8" Stickout		
1/16" (1.6mm)			
19-21 Volts Argon/CO2 30-35 CFH 3/4" Stickout	28-30 Volts Argon/Oxygen 40-45 CFH 3/4" Stickout	Hardness	56 – 60 Rc
		Non-Machinable	Must be ground
		Maximum Overlay	Unlimited with proper procedure
25 Lb. Spools, 110 Lb. Drums, 220 Lb. Drums			

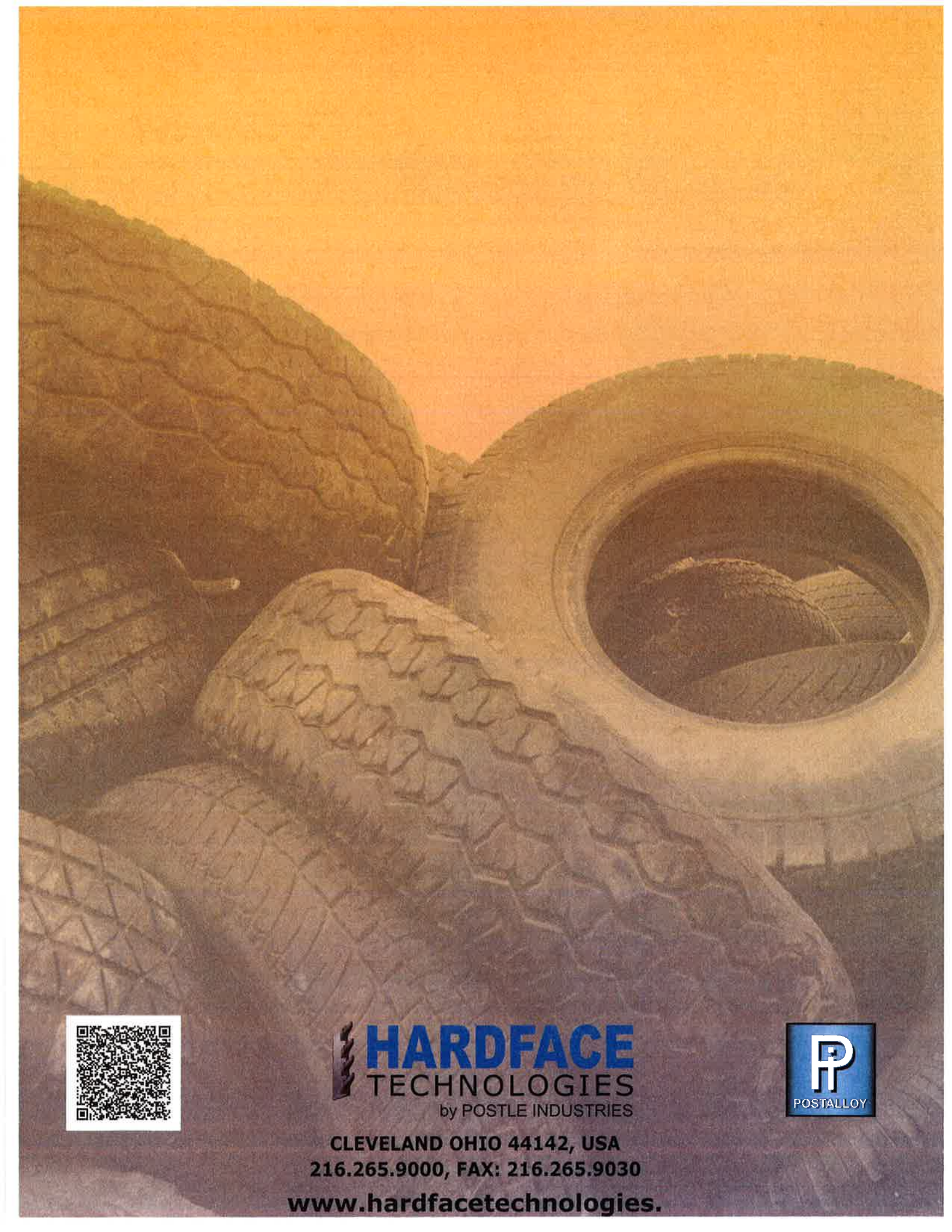
## POSTALLOY SUPER-EDGE

Short-Arc	Spray-Arc		
.045" (1.2mm)		<p>An abrasion resistant, high speed tool steel designed for applications where edge retention is a primary concern. Weld deposits are martensitic with micro-carbides evenly dispersed throughout the deposit. These properties create a fracture resistant cutting edge even under high compressive loads. It's alloyed with molybdenum and tungsten for superior high temperature hot hardness. This property helps maintain a sharp edge under localized high heat conditions created by extreme friction. Please contact Postle Industries for proper procedures.</p>	
17-19 Volts Argon/CO2 30-35 CFH 1/2" Stickout	26-29 Volts Argon/Oxygen 40-45 CFH 5/8" Stickout		
1/16" (1.6mm)			
19-21 Volts Argon/CO2 30-35 CFH 3/4" Stickout	28-30 Volts Argon/Oxygen 40-45 CFH 3/4" Stickout	Hardness	60 – 65 Rc
		Non-Machinable	Must be ground
		Maximum Overlay	2 – 3 Layers
25 Lb. Spools, 110 Lb. Drums, 220 Lb. Drums			

## POSTALLOY ULTRA-SHRED 580

Short-Arc	Spray-Arc		
.045" (1.2mm)		<p>The ultimate hardfacing wire for tire shredding knives. A martensitic tool steel type alloy with numerous tightly packed carbides for excellent abrasion resistance under high impact. One-layer deposits exhibit wear characteristics that would be expected from a chromium carbide hardfacing product. The alloy properties create a resistant cutting edge even under high heat conditions created by extreme friction.</p>	
17-19 Volts Argon/CO2 30-35 CFH 1/2" Stickout	26-29 Volts Argon/Oxygen 40-45 CFH 5/8" Stickout		
1/16" (1.6mm)			
19-21 Volts Argon/CO2 30-35 CFH 3/4" Stickout	28-30 Volts Argon/Oxygen 40-45 CFH 3/4" Stickout	Hardness	55 – 58 Rc
		Non-Machinable	Must be ground
		Maximum Overlay	Unlimited with proper procedure
25 Lb. Spools, 110 Lb. Drums, 220 Lb. Drums			





 **HARDFACE**  
TECHNOLOGIES  
by POSTLE INDUSTRIES



CLEVELAND OHIO 44142, USA  
216.265.9000, FAX: 216.265.9030  
[www.hardfacetechologies.com](http://www.hardfacetechologies.com)